

Autodesk Inventor Certification Prep Course Challenge

Challenge: Complete the housing design.

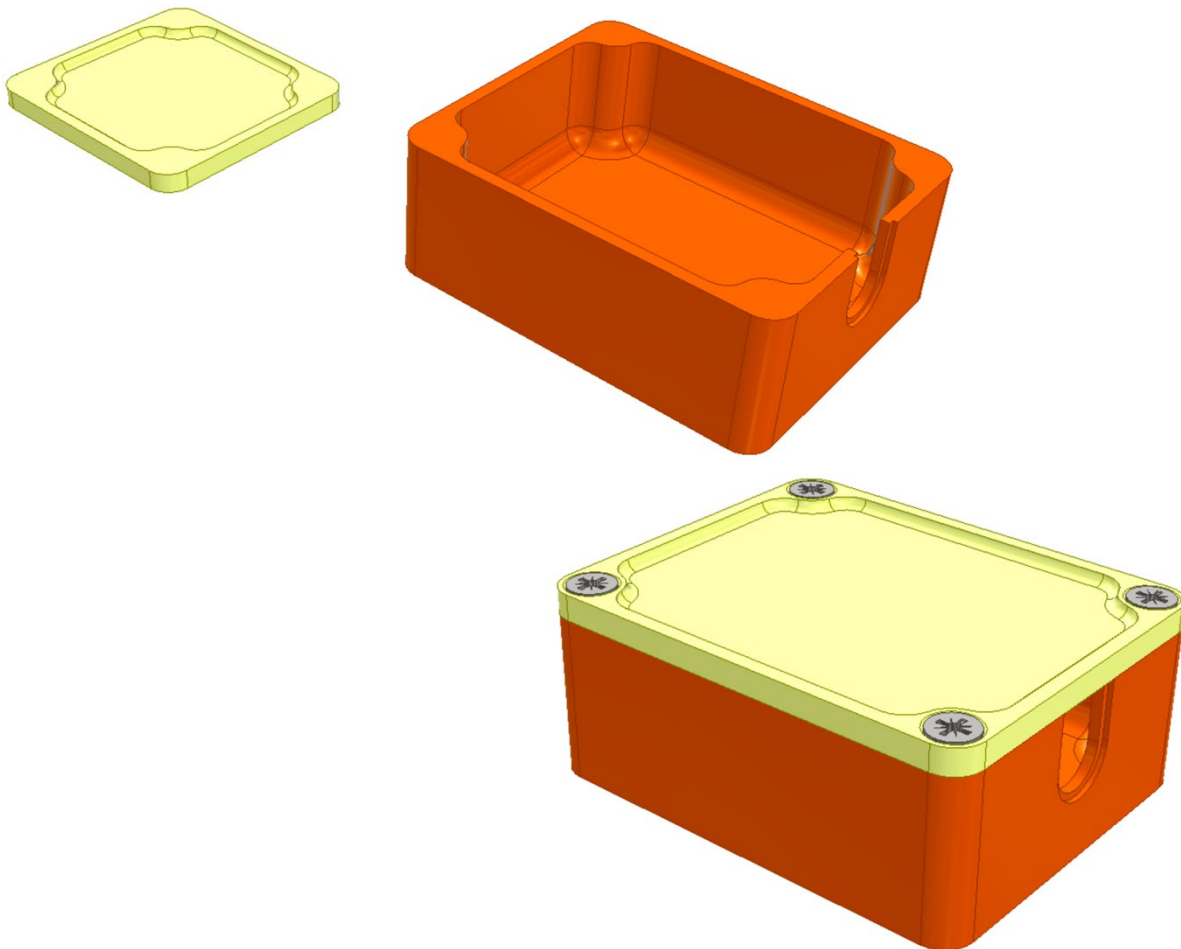
Criteria: Complete the Machined Box design by using adaptivity to fit the lid on the base then adding screws to attach the lid.

Open the *Machined Box.iam* file.

Make the Lid adaptive.

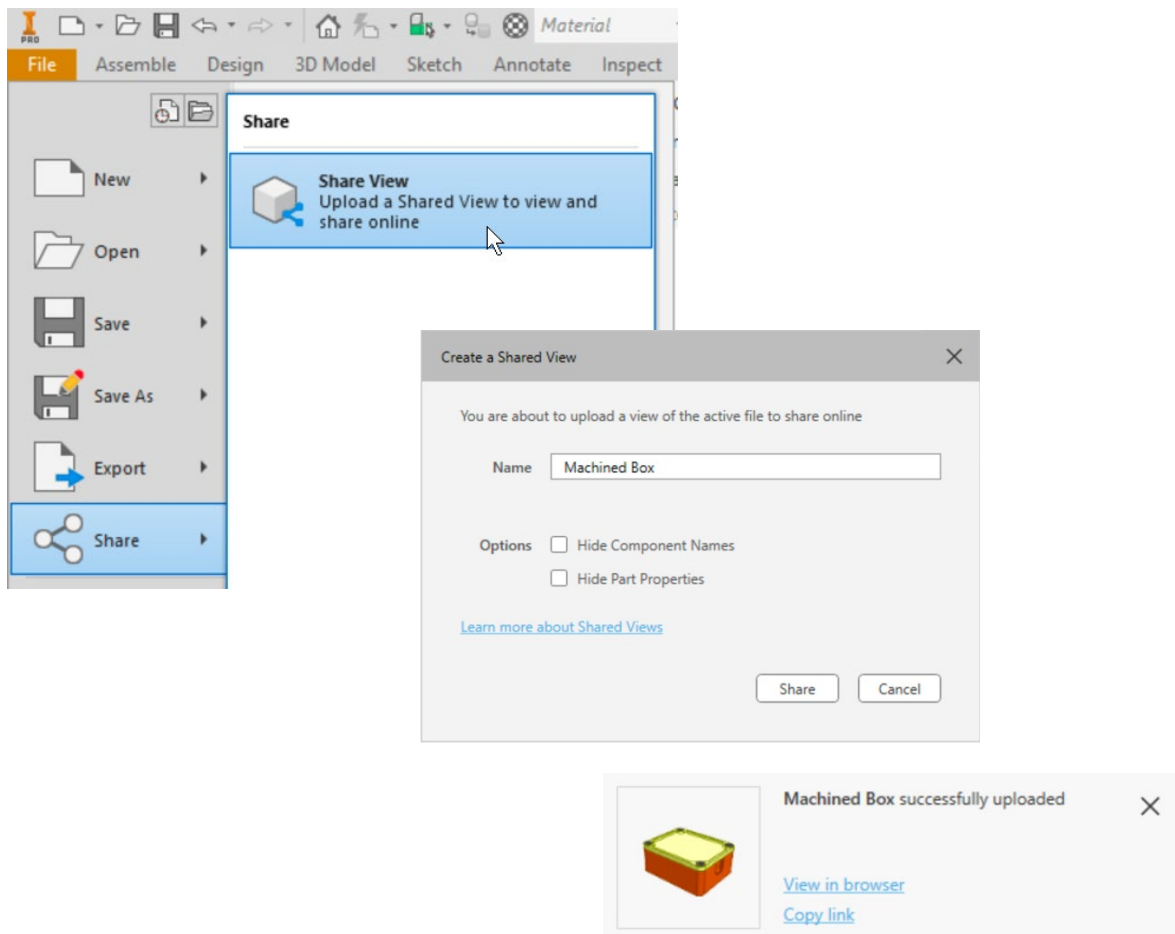
Constrain the Lid to resize the lid.

Add #12 X $\frac{3}{4}$ " type 1A cross recessed flat countersunk screws countersunk into the Lid with blind, tapped holes in the base at each corner.



Sharing your design for review: To share your design for review you will need to do the following. Create a public share link with the download option and share the link with your instructor. To create a share link follow these steps.

- Using the File drop down select Share > Share View
- Give the Shared View a name and deselect 'Hide Component Names' and 'Hide Part Properties'
- When the dialog appears to inform you the design has been successfully uploaded click Copy Link and send the link to the person who will be reviewing your work.



Make sure they are aware of the criteria that your work needs to address below

Grading Rubric:

1. **Yes/No:** Was the Lid made adaptive and properly sized?
2. **Yes/No:** Was the Volume property of the assembly ~11.04 cubic inches?
3. **Yes/No:** Are there six components in the assembly?